



Presents
IDEAL HOME IMPROVEMENT EXPOSÉ
interiors, furnishings and decor

9th - 23rd Dec

B&B
PROJECT SPACE
& GALLERY



Depresed bear of the southeast no. 1

© Matt Rowe 2005




Double Vodka for Fyodor Dostoevsky

© Joseph Burthe 2005

IDEAL HOME IMPROVEMENT EXPOSÉ

This first show at the B&B Project Space will open the gateway for interaction with the vibrant heritage of the Shepway area. Visitors will have the opportunity to view an array of local artefacts. These objects have been reassembled to satisfy the needs of modern society, by resident skilled craftsmen Joseph Burthe and Matt Rowe.

✉ clubshepway@gmail.com  www.14tontinestreet.com www.clubshepway.com
B & B project space & gallery 14 Tontine Street Folkestone Kent CT20 1JU

Matthew Rowe

My practice centres on the reflection of contemporary society. By drawing upon the history of bric-a-brac, collections and ornamental objects that we choose to express our own taste and ideals, a dialogue is raised to discuss the status and value of the material.

Through the conscious and structured manipulation of decorative objects and the analysis of ceramic materials as part of visual culture the work becomes a hybrid of sources splicing together disparate forms in an attempt to create a new object. An amalgamation, indicative of the contemporary moment: a social indicator registering on both a personal and historical level.



St. George for tea © 2005 Matt Rowe



The Dragon © 2005 Matt Rowe

Joseph Burthe ***Furniture and Domestic Items***

When confronted with an art object, the viewer must retrospectively refer to a creative process. The viewer interprets the information presented to them, in order to surmise what the artist's original intention may have been.

Can it be possible for the viewer to accurately comprehend the artist's original intention, given the magnitude of subjective connotations involved in their interpretation of the art object?

The artist selects materials for use in the creative process that are representative of a particular social heritage and status, and as such will have particular connotations for the viewer. In this instance, furniture and other domestic items have been reconstructed, combined with other media and incorporated into the art object. Removed from their functional context, each domestic item suggests an individual historical narrative alluding to its background and previous owners.



Letter Rack for Vincent Van Gogh ©Joseph Burthe 2005



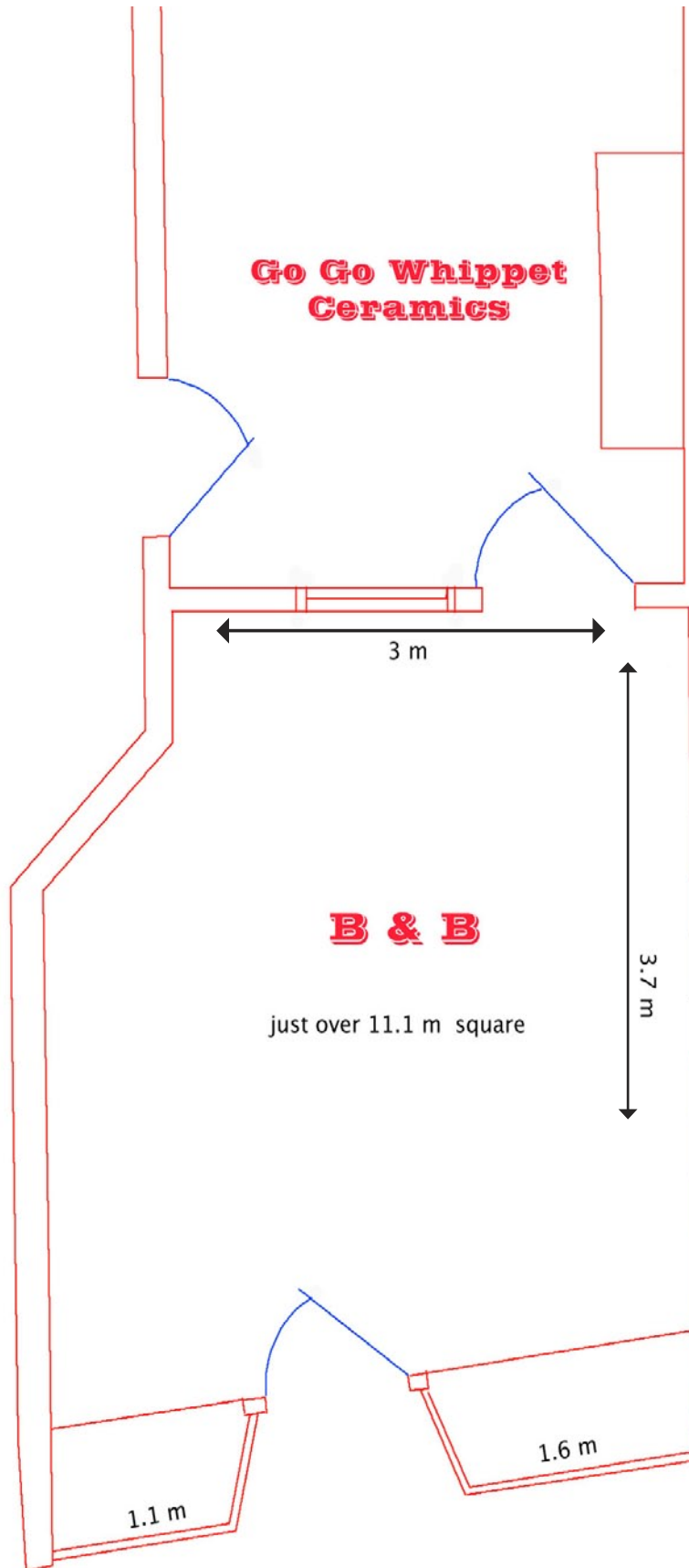
Bureau for Charles Baudelaire ©Joseph Burthe 2005

Combined with portraiture, the selected materials are given further historical narrative. Culturally significant figures are depicted in oil paint, applied directly to the reassembled domestic items. The biographical history of the chosen subject becomes associated with the particular historical narrative of the chosen materials.

Having researched the biography of the chosen subject, together with relative literature, recorded music, photographs, art and film, the artist is able to gain an impression of the popular cultural perception of this person. Relying upon this legacy surrounding the chosen subject, the painting process acts as a quest to depict a quintessential iconographic image; a séance to accurately determine the habitus of culturally significant figures.

The perception of the chosen materials, the depicted subject and the creative process are re-evaluated through comparison and recontextualisation. By encouraging simultaneous analysis of the subject, the materials and the creative process, the artist aims to implement a narrative that may strengthen the affinity between artist and audience, whilst raising our cultural awareness and understanding.

Floor Plan











Bedside cabinet for Franz Kafka

Made in Britain



© Joseph Burthe 2005

Contraceptive Case For Henry Miller

Made in Britain



© Joseph Burthe 2005

Travelling Notebook Case For Jean Genet

© Joseph Burthe 2005



Made in Britain

© Joseph Burthe 2005



Made in Britain

Depressed bear of the southeast no. 1
© Matt Rowe 2005



Made in Britain

Cinque port spectator sport No.1
© Matt Rowe 2005



Made in Britain

Definitely on the winning team
© Matt Rowe 2003

Made in Britain



Bird watching with the
depressed bear of the southeast
© Matt Rowe 2005



Made in Britain



The Dragon
© Matt Rowe 2004

Made in Britain



St. George for tea
© Matt Rowe 2004

Made in Britain



Double Vodka For Fyodor Dostoevsky

© Joseph Burthe 2005



Made in Britain

Letter Rack For Vincent Van Gogh

© Joseph Burthe 2005



Made in Britain



Club Shepway is a group of emerging and established artists who are committed to furthering their aims through the unification of their efforts towards a new scheme of exhibiting, communicating and practice. They aim to develop an active and engaging culture of contemporary art, music and its encompassing dialogue within the geographical and conceptual boundaries that Kent provides.



for more information on becoming a member of club shepway and all future events view our website listed below.

 www.clubshepway.com  clubshepway@gmail.com

 Club Shepway Creative Foundation The Glassworks Mill Bay Folkestone Kent CT20 1JG

full price only

£299.99
each

GO GO WHIPPET PRESENTS A BRAISE OF LUXURY DECORATIVE PHEASANTS

GENUINE IMITATION SILVER PHEASANTS

Inspired by 19th century silver where, Go Go whippet ceramics has expertly crafted these ceramic imitation silver pheasants following the legacy of the Staffordshire pottery industry.

The pieces investigate how British ceramic industry has traditionally imitated the more valuable and fashionable silver wear objects thought history.



'Genuine imitation silver pheasants' 2004

75cm x 25cm
ceramic & card

Order form: please send me these top quality pheasants asap

Name: _____
MR/MRS/MISS/MS BLOCK CAPITALS PLEASE

Address: _____
go-go-whippet

Post code: _____

Tel: _____

Email: go-go-whippet@catlover.co.uk _____
Email: _____

This is a true class product! developed using the finest ceramic materials including: silver luster, semiporcelain earthenware slip and high quality enamels.

Add £20 extra for postage and packaging

Please tick here if you wish to receive information on future events and offers from Go Go whippet.

